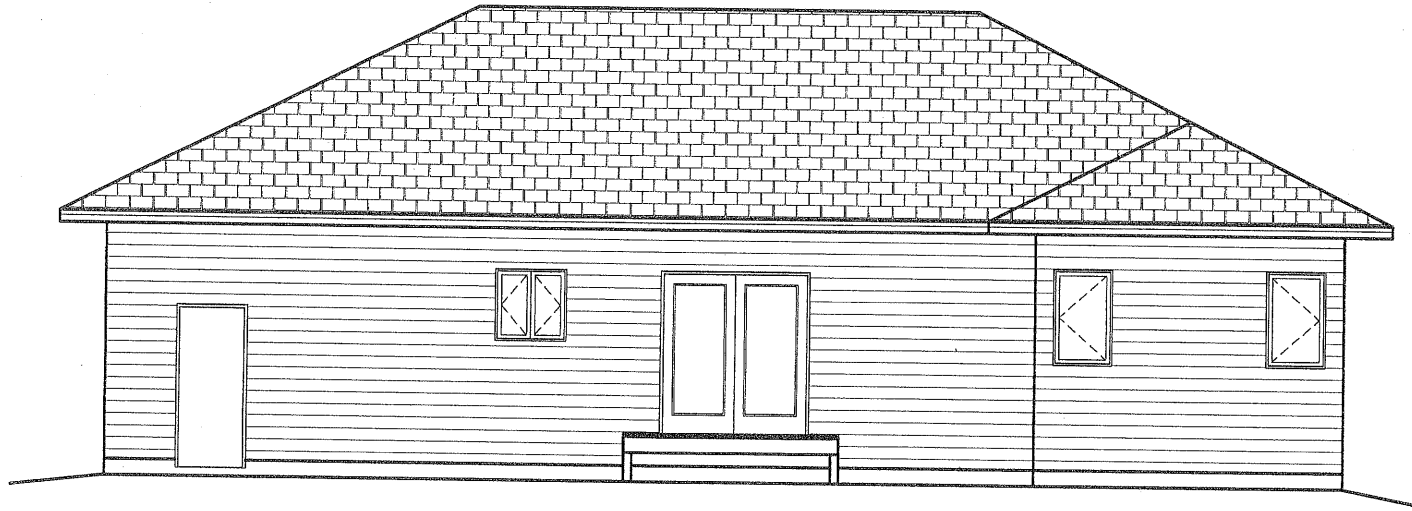




**FRONT ELEVATION**

1/4"=1'-0"



**REAR ELEVATION**

1/4"=1'-0"

Blueprints are property of JOSHUA Inc.  
 They cannot be reproduced, distributed  
 or copied without the permission of  
 Joshua Inc.  
 Copyright 2008

DRAWN BY:  
R.A.  
REVISER:

DATE:  
4/25/06

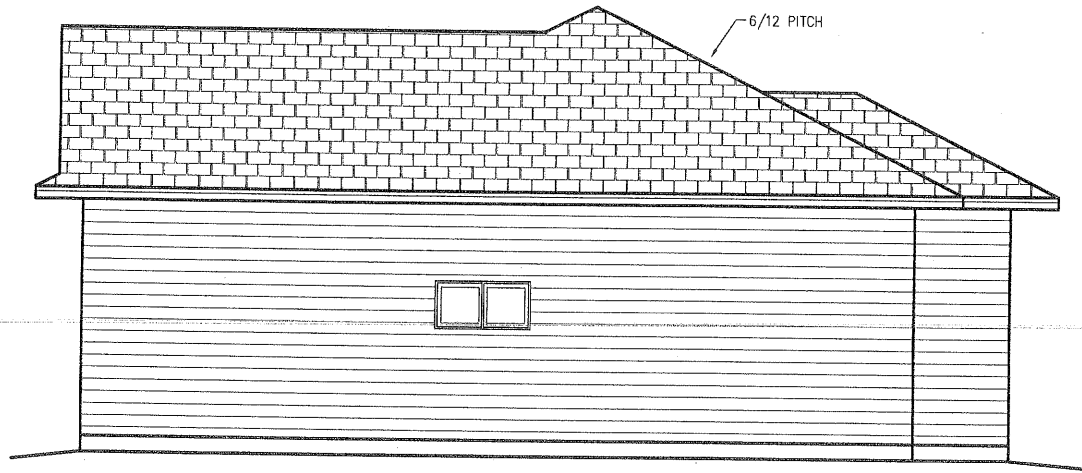
CUSTOMER:  
JOSHUA INC. / THE VONDRA  
YARD:  
SIOUX FALLS

VERIFY ALL DIMENSIONS ALTHOUGH EVERY POSSIBLE EFFORT IS MADE TO INSURE THE ACCURACY OF DIMENSIONS AND OPENINGS. IT IS THE CONTRACTOR'S RESPONSIBILITY TO CHECK AND CONFIRM ALL ROUGH OPENINGS AND OTHER DIMENSIONS FOR ACCURACY.

4040 S. GRANGE DR.  
SIOUX FALLS, SD 57105  
(605)336-0860  
**SCOTT LUMBER**  
A DIVISION OF LAMBERT HARDIS, INCORPORATED

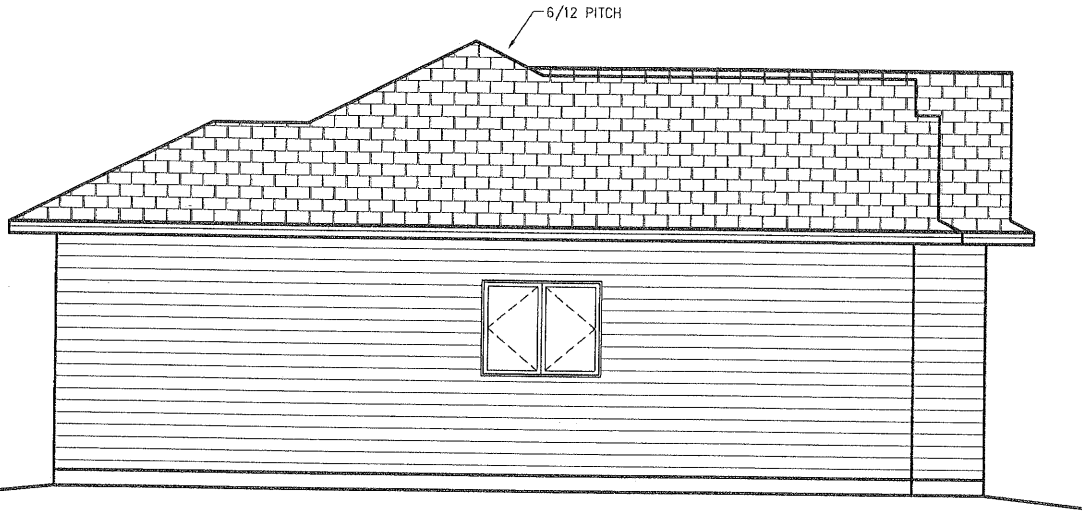


PLAN #  
SFL06272  
PAGE  
OF



**RIGHT SIDE**


1/4"=1'-0"

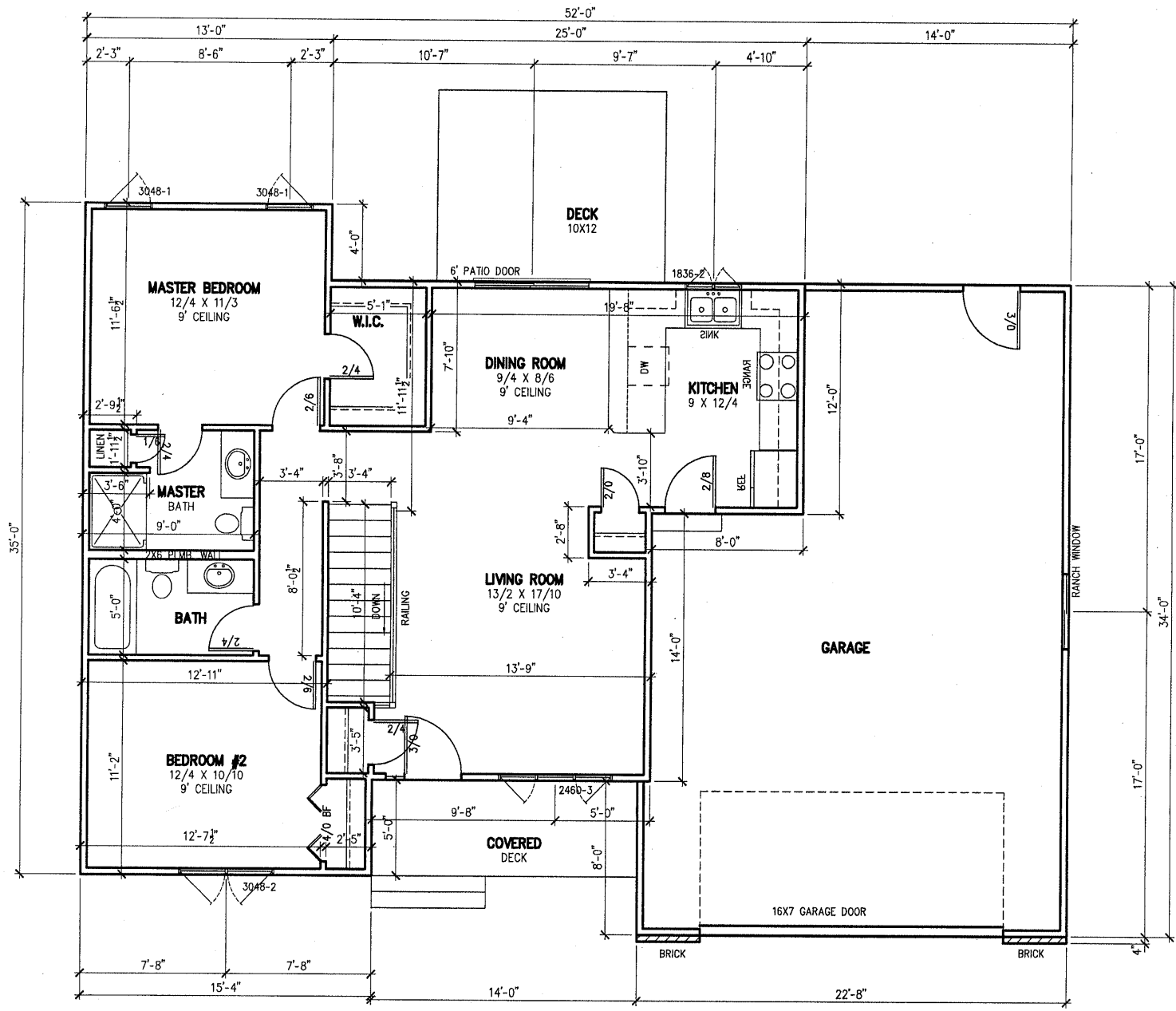


**LEFT SIDE**

1/4"=1'-0"

Blueprints are property of JOSHUA Inc.  
They cannot be reproduced, distributed  
or copied without the permission of  
Joshua Inc.  
Copyright 2008

PLAN # SFL06272 PAGE OF		SCOTT LUMBER A DIVISION OF LAMPEET YARDS, INCORPORATED 4040 S. GRANITE DR. SIOUX FALLS, SD 57105 (605)336-0986	VERIFY ALL DIMENSIONS. ALTHOUGH EVERY POSSIBLE EFFORT IS MADE TO INSURE THE ACCURACY OF DIMENSIONS AND OPENINGS, IT IS THE CONTRACTOR'S RESPONSIBILITY TO CHECK AND CONFIRM ALL ROUGH OPENINGS AND OTHER DIMENSIONS FOR ACCURACY. MADE IN THE USA. DIMENSIONS AND WEIGHTS ARE APPROXIMATE. COMPANY AND CONTRACTOR ACCEPTING THE LOAD IS RESPONSIBLE FOR LOCAL PROBLEMS AND ACCEPTING CONSTRUCTION APPROVALS FOR THE PROJECT. PLEASE USE THIS LAMPEET MARK REPRESENTATIVE ABOUT ANY APPLICATION FOR WHICH YOU ARE USING.	CUSTOMER: JOSHUA INC. / THE VONDRA	DRAWN BY: R.A.
				YARD: SIOUX FALLS	DATE: 4/26/06

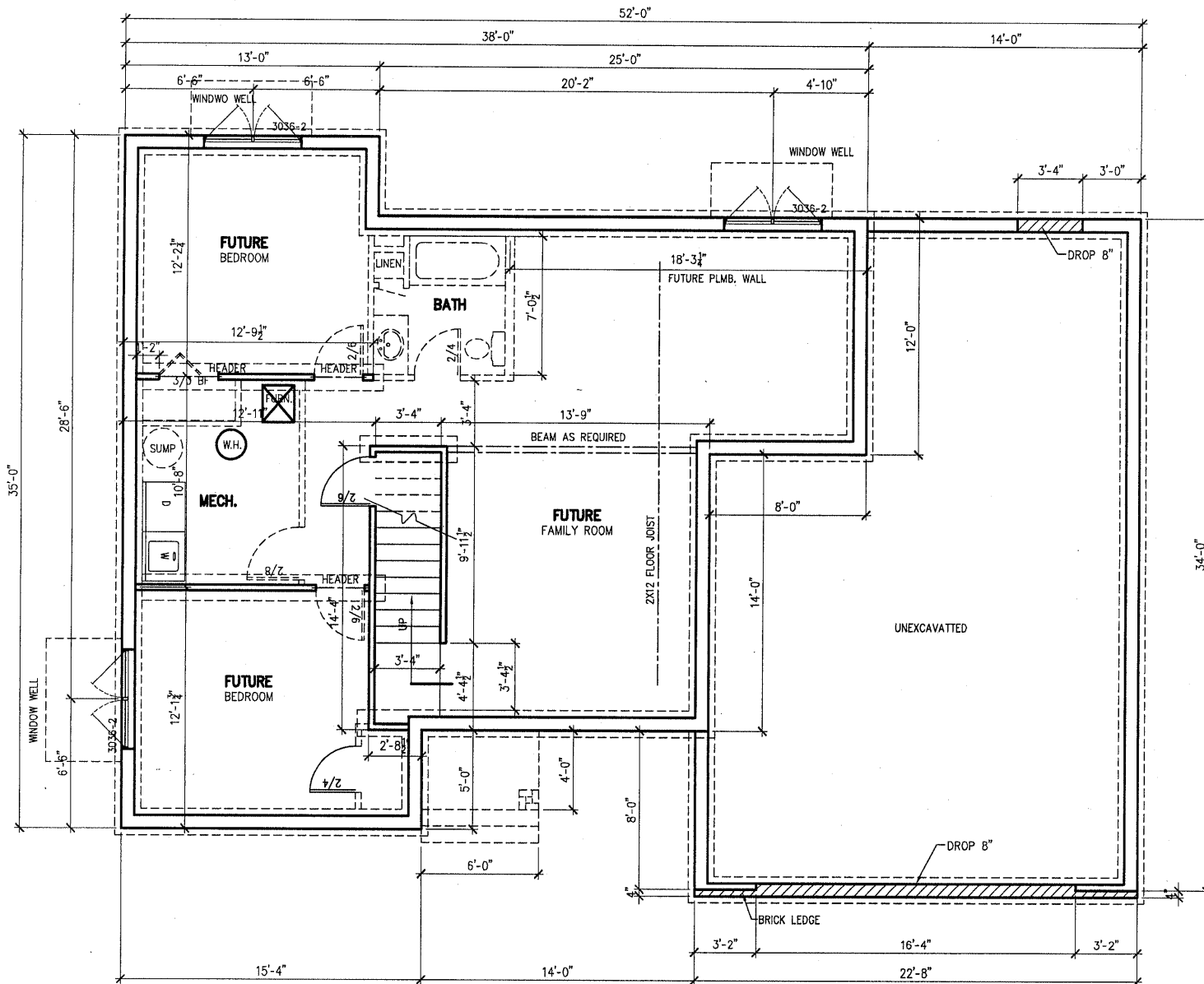


**FLOOR PLAN**

1/4"=1'-0"  
1005 SF

Blueprints are property of JOSHUA Inc.  
They cannot be reproduced, distributed  
or copied without the permission of  
Joshua Inc.  
Copyright 2008

4040 S. GRANGE DR. SIOUX FALLS, SD 57105 (605)338-0869 <b>SCOTT LUMBER</b> A DIVISION OF LAMPERT HARDIS, INCORPORATED	VERIFY ALL DIMENSIONS ALTHOUGH EVERY POSSIBLE EFFORT IS MADE TO INSURE THE ACCURACY OF DIMENSIONS AND TO INSURE THE CONTRACTOR'S RESPONSIBILITY TO CHECK AND CONFIRM ALL ROUGH OPENINGS AND OTHER DIMENSIONS FOR ACCURACY. THE CONTRACTOR SHALL BE RESPONSIBLE FOR OBTAINING ALL NECESSARY PERMITS AND APPROVALS FROM THE CITY OF SIOUX FALLS, SOUTH DAKOTA.	CUSTOMER: JOSHUA INC. / THE VONDRA YARD: SIOUX FALLS	DRAWN BY: R.A. REVISED:
	PLAN # SFL06272 PAGE 01 OF 01	DATE: 4/26/06	DATE: 4/26/06



**FOUNDATION PLAN**

1/4"=1'-0"

Blueprints are property of JOSHUA Inc.  
 They cannot be reproduced, distributed  
 or copied without the permission of  
 Joshua Inc.  
 Copyright 2008

DRAWN BY: R.A.	DATE: 4/26/06	CUSTOMER: JOSHUA INC. / THE VONDRA	YARD: SIOUX FALLS	VERIFY ALL DIMENSIONS TO INSURE THE ACCURACY OF DIMENSIONS AND CONFIRM ALL OPENINGS. IT IS THE CONTRACTOR'S RESPONSIBILITY TO CHECK AND CONFIRM ALL ROUGH OPENINGS AND OTHER DIMENSIONS FOR ACCURACY. THESE PLANS DETAIL CONNECTIONS AND SPECIFIC STRUCTURAL MEMBERS FOR NON-STANDARD APPLICATIONS. THE COMPANY/INDIVIDUAL PROVIDING THESE PLANS SHALL MAINTAIN THE ORIGINAL SET OF PLANS AND ALL REVISIONS AND SHALL BE RESPONSIBLE FOR THE ACCURACY OF THE INFORMATION PROVIDED HEREON.
PLAN #	SFL06272	PAGE		OF



**SCOTT LUMBER**

A DIVISION OF LAMPERT YARDS, INCORPORATED

