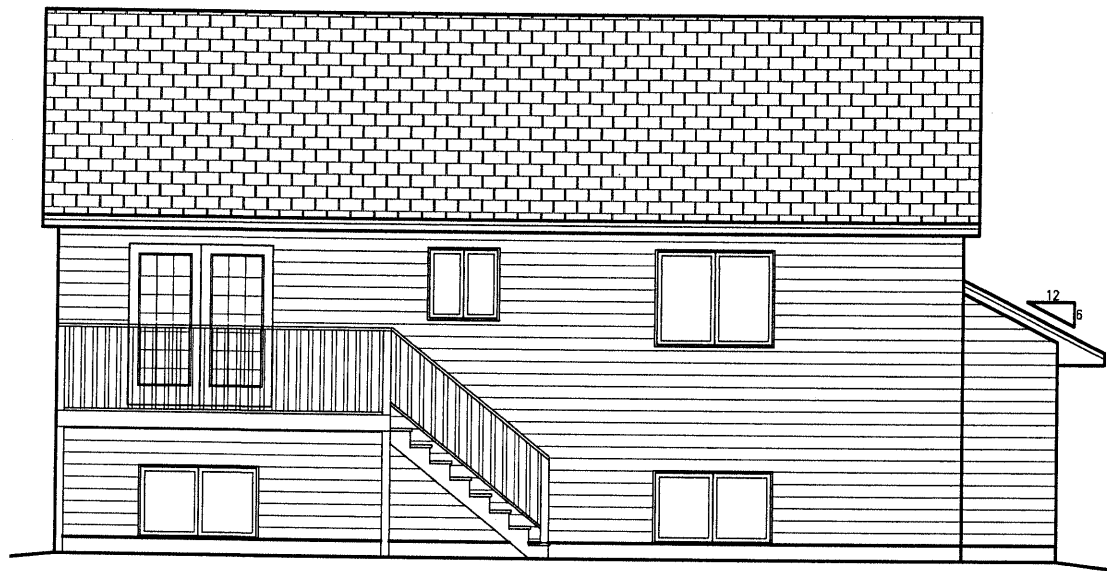




FRONT ELEVATION
1/4"=1'-0"

JOSHUA INC.
5700 Shadow Ridge
Sioux Falls, SD 57108



REAR ELEVATION
1/4"=1'-0"

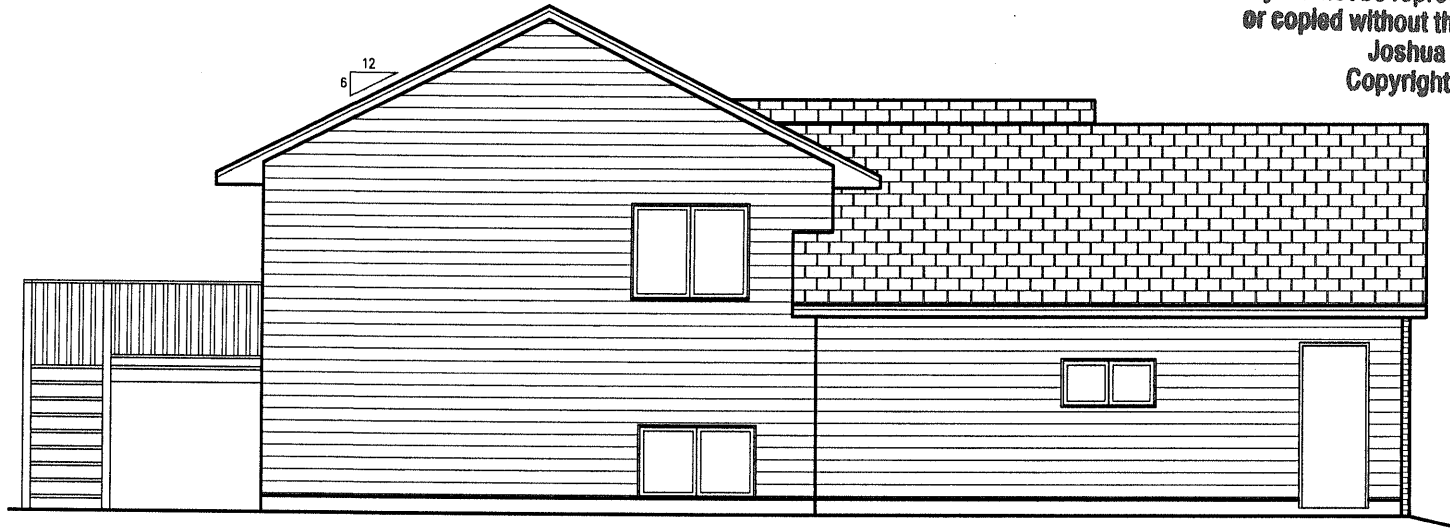
THE FLYNN III

Blueprints are property of JOSHUA Inc.
They cannot be reproduced, distributed
or copied without the permission of
Joshua Inc.
Copyright 2008

DRAWN BY: R. A.	REVISIONS:	DATE: 2/1/08	CUSTOMER: TIM STENBERG	YARD: SIOUX FALLS	<small>ALTHOUGH EVERY POSSIBLE EFFORT IS MADE TO VERIFY ALL DIMENSIONS, IT IS THE CONTRACTOR'S RESPONSIBILITY TO CHECK AND CONFIRM ALL ROUGH OPENINGS AND OTHER DIMENSIONS FOR ACCURACY.</small> <small>MADE SURE ALL DIMENSIONS AND SPACING TECHNICAL, NUMBER OF AND PLACEMENT, INCLUDING THE CORRECT MATERIAL, POSITIONING THE LUMBER IS NECESSARY FOR CORRECT PROTECT AND ACCEPTED CONSTRUCTION. REFER TO THE STRUING APPLICATION FOR LIST OF MATERIALS, USE OF THIS LUMBER, AND ANY SPECIALTY, AND ANY APPLICATIONS FOR WHICH YOU ARE SURE.</small>
PLAN #	SFL0654	OF			

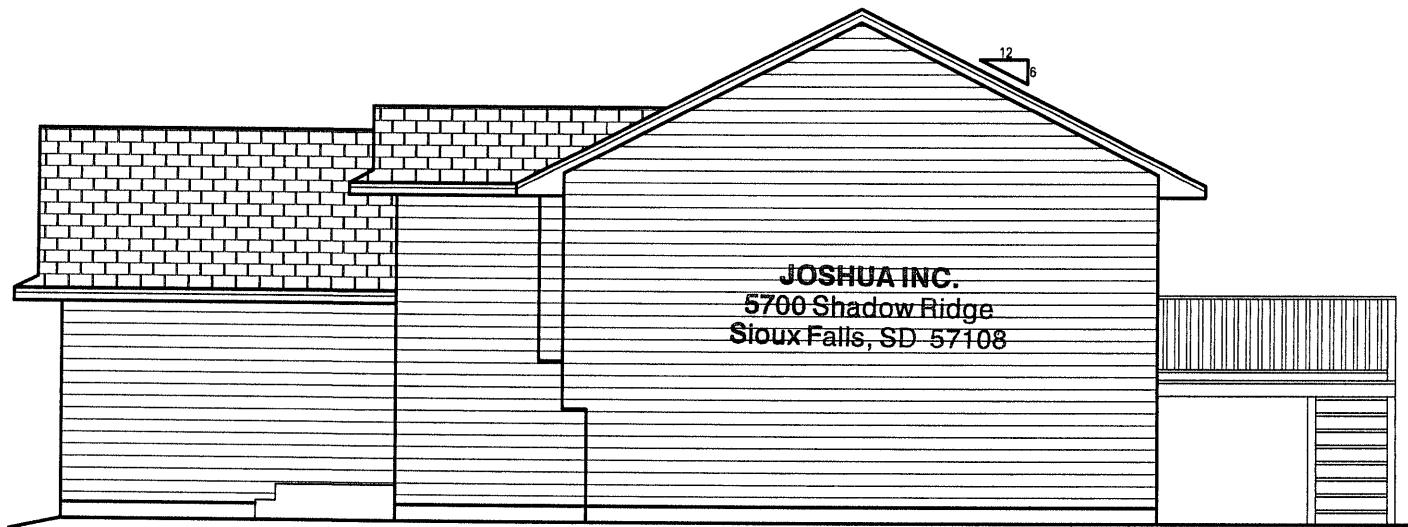
PRELIMINARY PLAN
NOT FOR CONSTRUCTION

Blueprints are property of JOSHUA Inc.
 They cannot be reproduced, distributed
 or copied without the permission of
 Joshua Inc.
 Copyright 2008



LEFT SIDE ELEVATION

SCALE: 1/4"=1'-0"



RIGHT SIDE ELEVATION

SCALE: 1/4"=1'-0"

JOSHUA INC.
 5700 Shadow Ridge
 Sioux Falls, SD 57108

DRAWN BY: R. A.	DATE: 2/1/06
CUSTOMER: TIM STENBERG	YARD: SIOUX FALLS

ALTHOUGH EVERY POSSIBLE EFFORT IS MADE TO INSURE THE ACCURACY OF DIMENSIONS AND FINISHES, THE ARCHITECT'S RESPONSIBILITY TO CHECK AND CONFIRM ALL DIMENSIONS AND OTHER DIMENSIONS FOR ACCURACY. THE ARCHITECT IS NOT RESPONSIBLE FOR ANY ERRORS OR OMISSIONS IN THE WORK OR FOR ANY CONSEQUENCES ARISING THEREFROM. THE USER IS RESPONSIBLE FOR VERIFYING ALL DIMENSIONS AND FINISHES BEFORE CONSTRUCTION BEGINS. PLEASE SEE YOUR CONTRACT FOR ADDITIONAL TERMS AND CONDITIONS FOR EACH YOU RECEIVE.

4040 S. GRANGE DR
 SIOUX FALLS, SD
 (605)338-0860
SCOTT LUMBER
 A DIVISION OF LAMPERT HARDIS, INCORPORATED



PLAN # SF10654	OF
PAGE	

PRELIMINARY PLAN
 NOT FOR CONSTRUCTION

