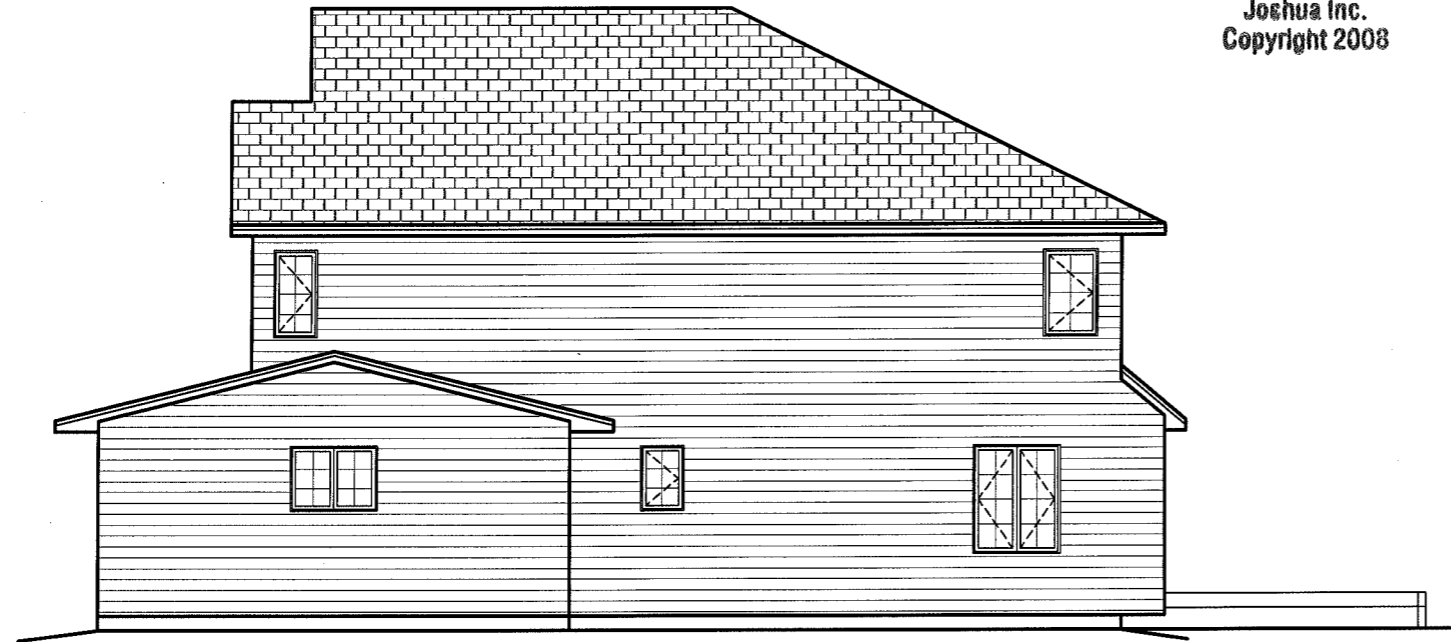


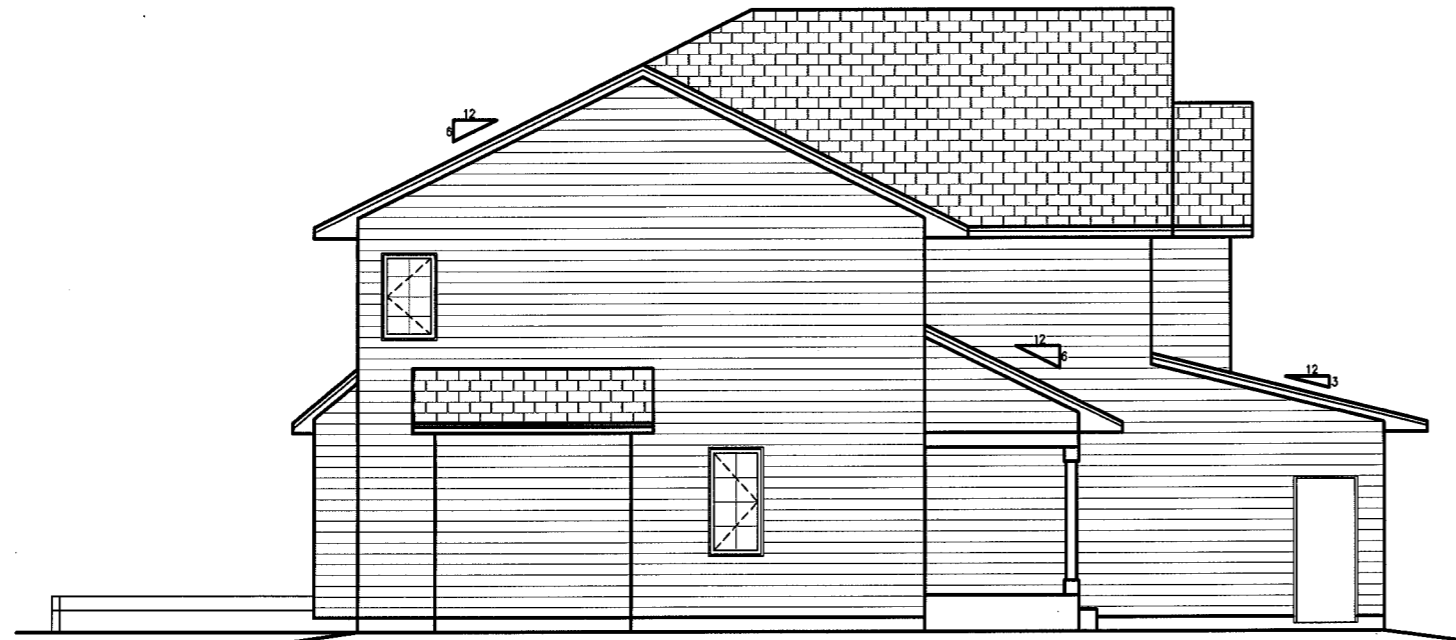
Blueprints are property of JOSHUA Inc.  
They cannot be reproduced, distributed  
or copied without the permission of  
Joshua Inc.  
Copyright 2008



**RIGHT ELEVATION**  
1/4"=1'-0"



**FRONT ELEVATION**  
1/4"=1'-0"

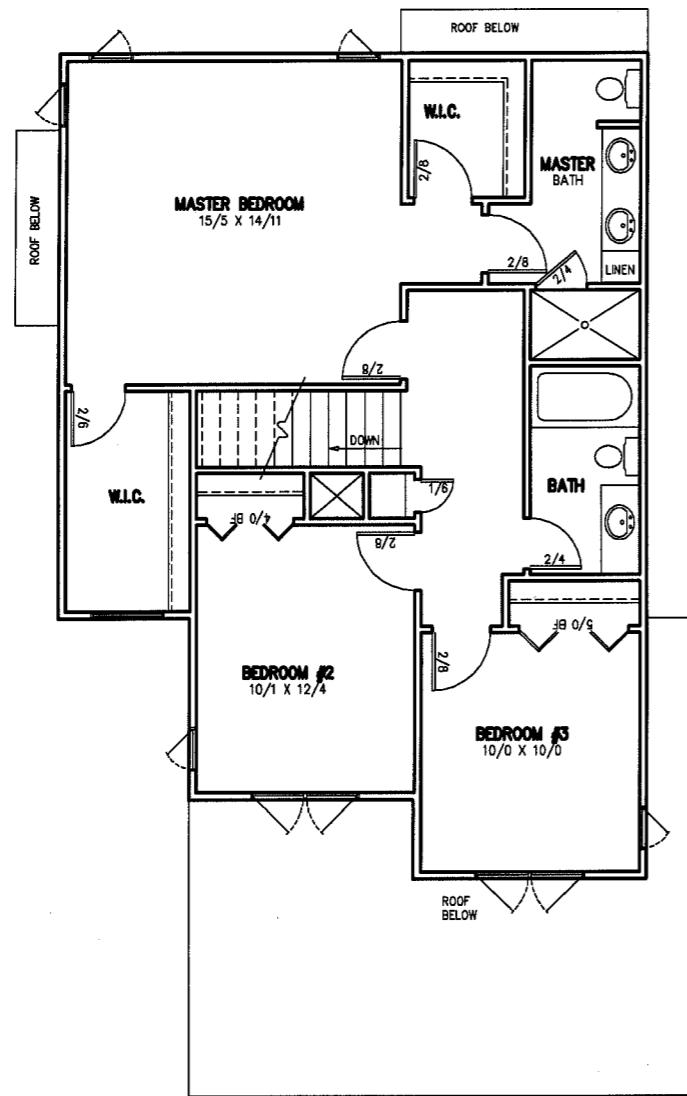


**LEFT ELEVATION**  
1/4"=1'-0"

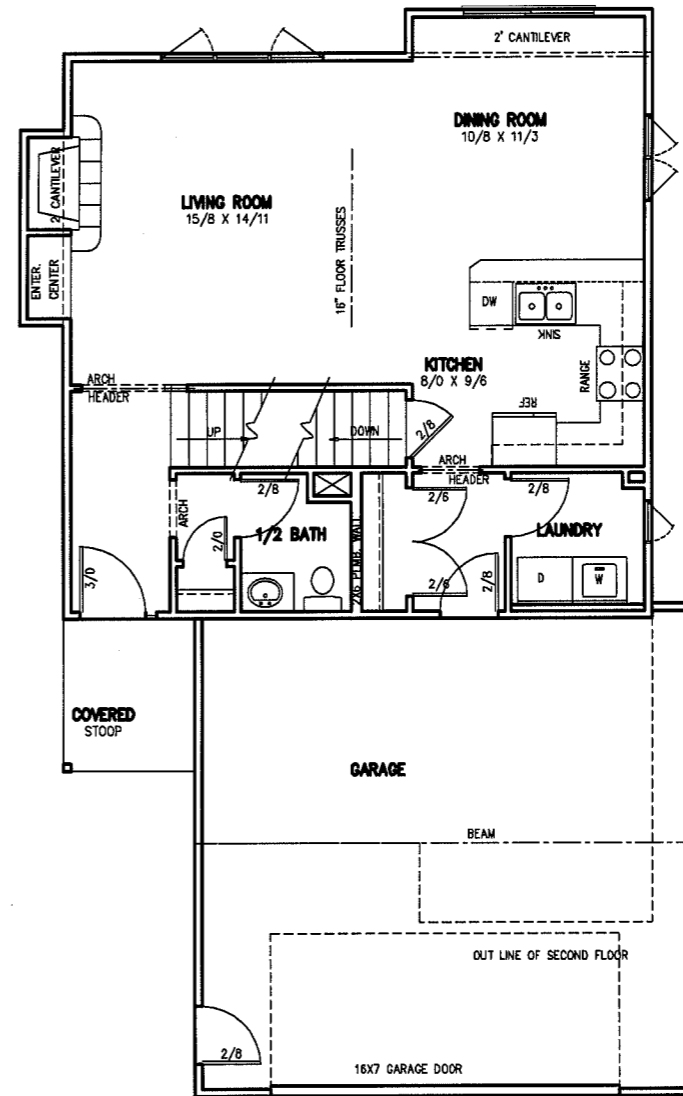


**REAR ELEVATION**  
1/4"=1'-0"

Blueprints are property of JOSHUA Inc.  
 They cannot be reproduced, distributed  
 or copied without the permission of  
 Joshua Inc.  
 Copyright 2008



**SECOND FLOOR PLAN**  
 1/4"=1'-0"  
 884 SF



**FLOOR PLAN**  
 1/4"=1'-0"  
 743 SF

Blueprints are property of JOSHUA Inc.  
 They cannot be reproduced, distributed  
 or copied without the permission of  
 Joshua Inc.  
 Copyright 2008

ROOF  
 ASPHALT SHINGLES  
 15# ASPHALT FELT  
 7/16" OSB ROOF SHEATHING  
 ROOF TRUSSES W/6" HEAL  
 R-40 CEILING INSULATION

STYLE "D" ROOF EDGE  
 1x6 FASCIA  
 ALUMINUM FASCIA AND  
 VENTED SOFFIT SYSTEM

ALL WINDOWS  
 .31 U VALUE

WALL  
 SIDING  
 HOUSEWRAP  
 7/16" OSB WALL SHEATHING  
 2x4 STUDS  
 R-13 INSULATION  
 4 MIL VAPOR BARRIER  
 1/2" GYPSUM BOARD

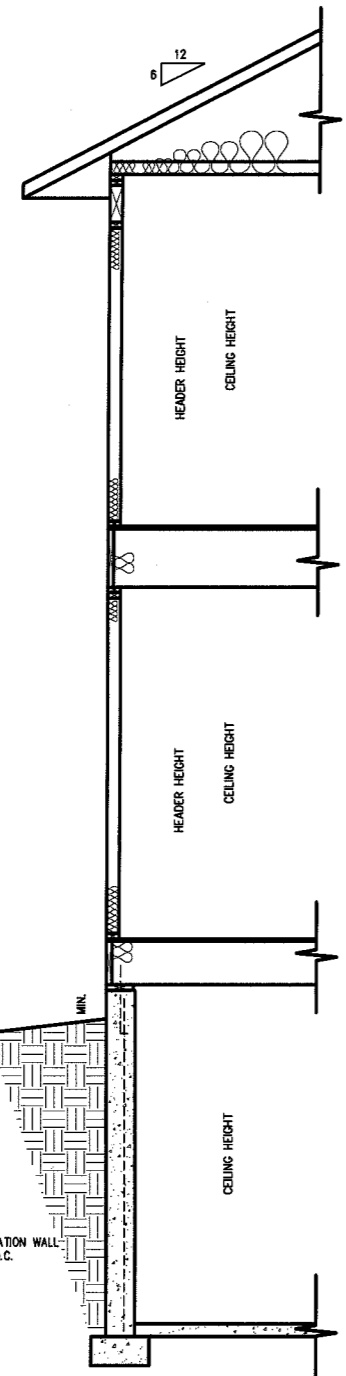
FLOOR  
 16" FLOOR TRUSS  
 3/4" FLOOR SHEATHING

WALL  
 SIDING  
 HOUSEWRAP  
 7/16" OSB WALL SHEATHING  
 2x4 STUDS  
 R-13 INSULATION  
 4 MIL VAPOR BARRIER  
 1/2" GYPSUM BOARD

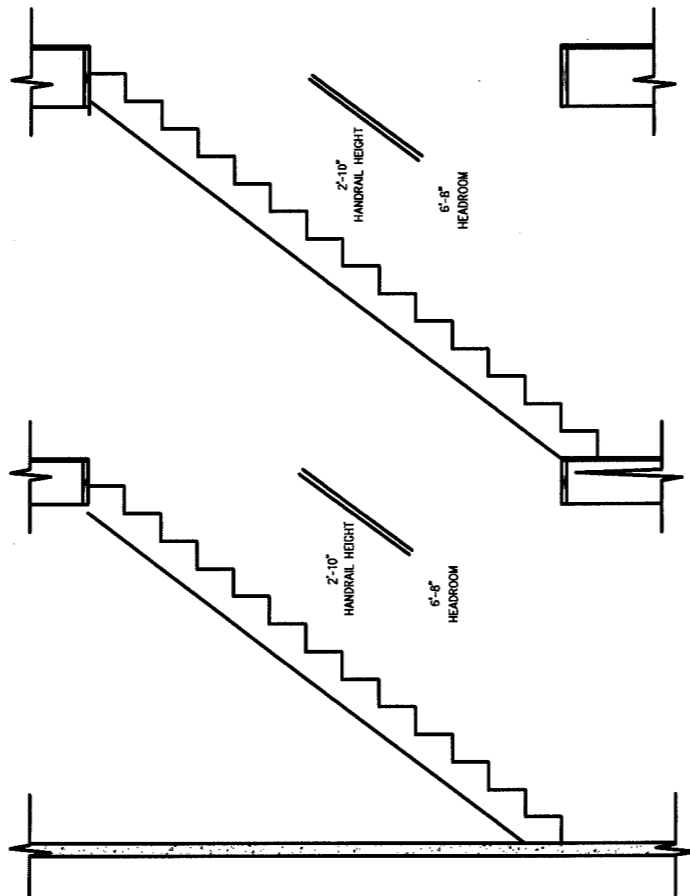
FLOOR  
 3/4" FLOOR SHEATHING

2x8 TREATED SILL PLATE  
 1/2" ANCHOR BOLTS

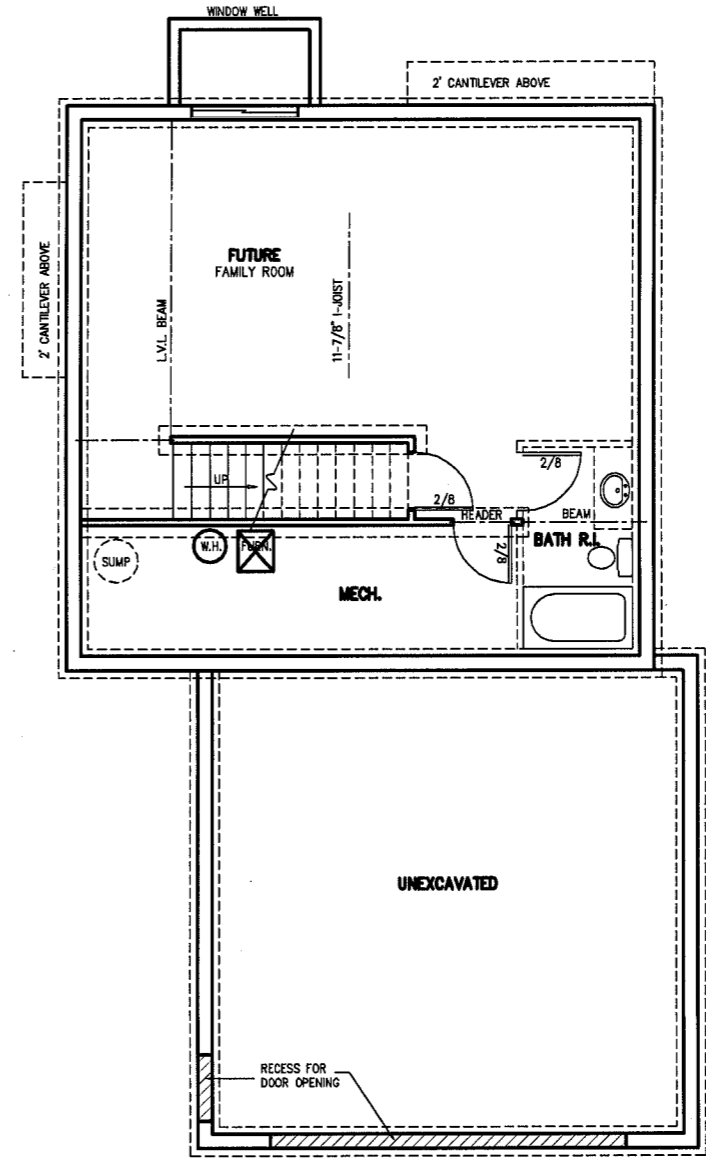
FOUNDATION WALL  
 8" POURED CONCRETE FOUNDATION WALL  
 W/ #8 REBAR VERT AT 48" O.C.  
 16" X 8" CONCRETE FOOTING  
 3 1/2" CONC FLOOR SLAB



**SECTION**  
 1/2"=1'-0"



**STAIR SECTION**  
 1/2"=1'-0"



PLAN #	SF07179
PAGE	01
CUSTOMER	JOSHUA INC. SIOUX FALLS
DATE	3/21/07
DRAWN BY	R.A. REVISOR
<p>440 S. GRANGE BL SIOUX FALLS SD (605)338-0888</p> <p><b>SCOTT LUMBER</b> A DIVISION OF LAMBERT YARDS, INCORPORATED</p>	
<p>VERIFY ALL DIMENSIONS. ALTHOUGH EVERY POSSIBLE EFFORT IS MADE TO INSURE THE ACCURACY OF DIMENSIONS AND FINISHES, IT IS THE CONTRACTOR'S RESPONSIBILITY TO CHECK AND CONFIRM ALL DIMENSIONS AND FINISHES. THE CONTRACTOR SHALL BE RESPONSIBLE FOR VERIFYING ALL DIMENSIONS AND FINISHES. THE COMPANY/OWNER SHALL NOT BE RESPONSIBLE FOR ANY ERRORS OR OMISSIONS.</p>	