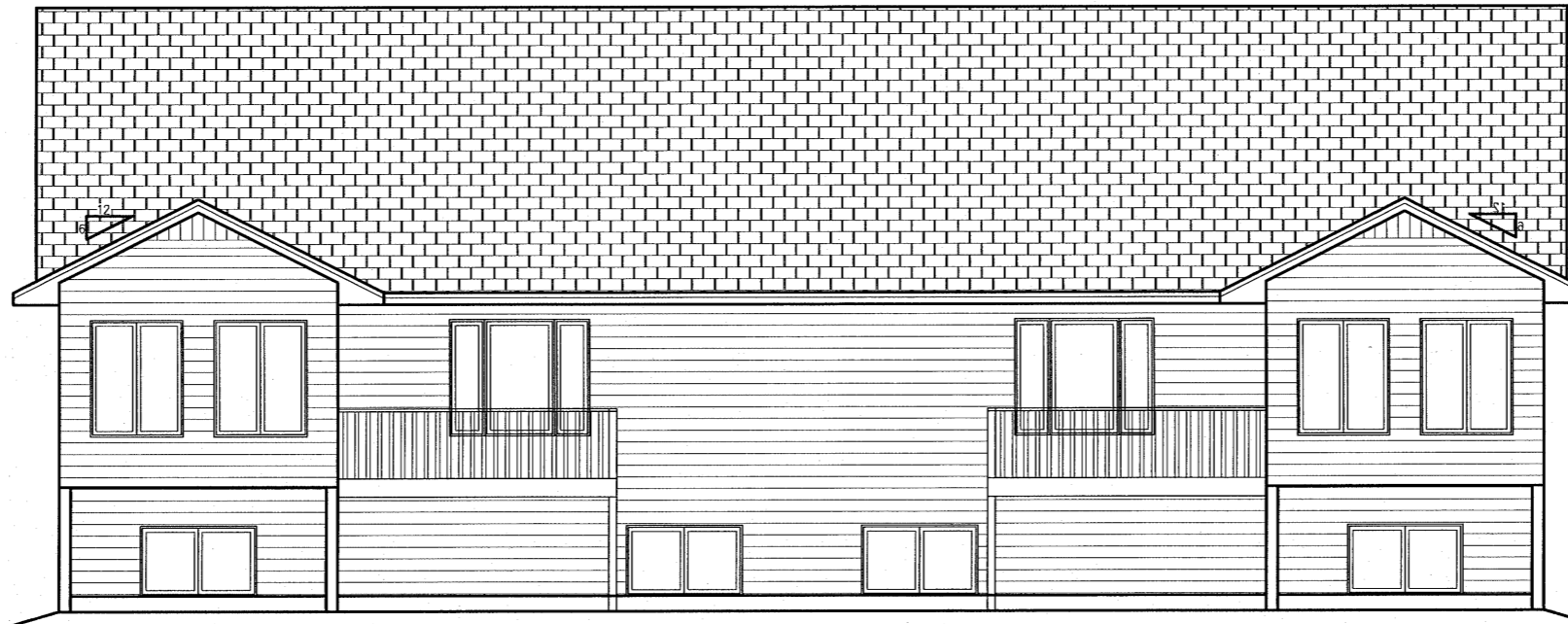


AMES "R2G3S"



FRONT ELEVATION
1/4"=1'-0"



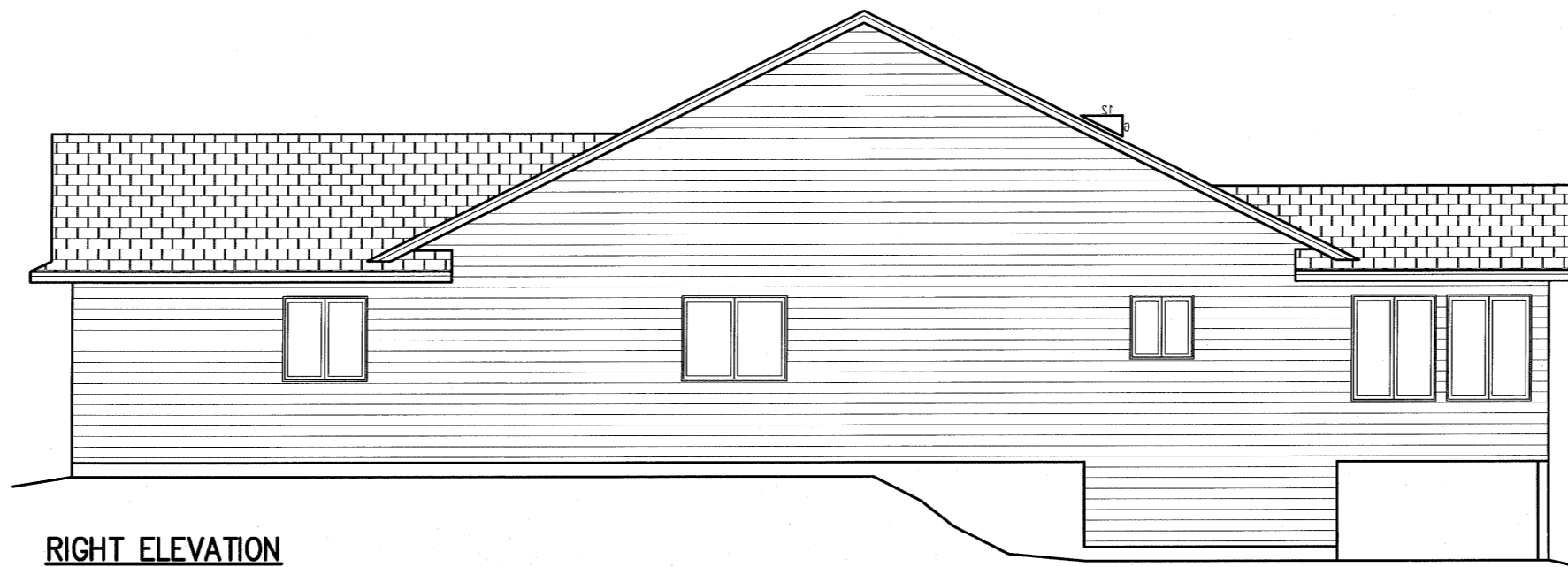
REAR ELEVATION
1/4"=1'-0"

PLAN # SFLO8388 OF PAGE
 CUSTOMER: JOSHUA INC. YARD: SIOUX FALLS
 DATE: 8/1/08
 DRAWN BY: R.A.
 REVISED:

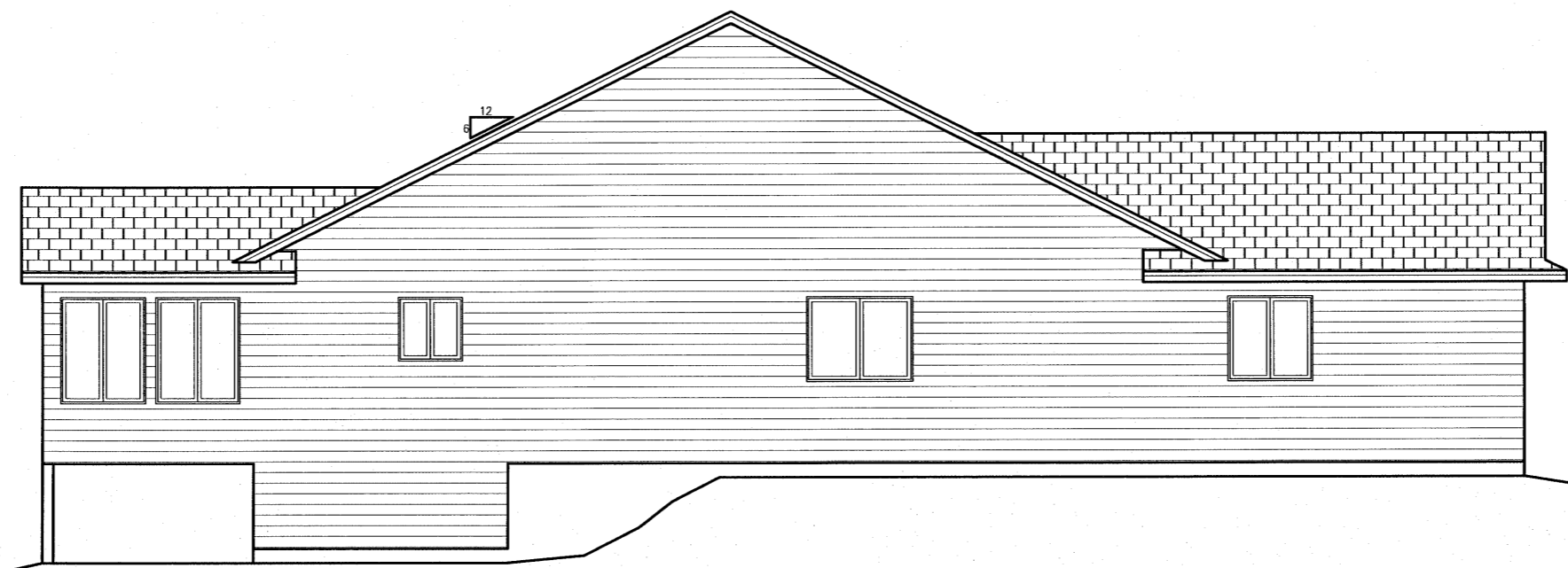
4040 S. GRANGE DR. SIOUX FALLS, SD (605)335-0860
 SCOTT LUMBER A DIVISION OF LAMPERT YARDS, INCORPORATED
 VERIFY ALL DIMENSIONS TO INSURE THE ACCURACY OF DIMENSIONS AND TO INSURE THE CONTRACTOR'S RESPONSIBILITY TO CHECK AND CONFIRM ALL ROUGH OPENINGS AND OTHER DIMENSIONS FOR ACCURACY.
 ALTHOUGH EVERY POSSIBLE EFFORT IS MADE TO INSURE THE ACCURACY OF DIMENSIONS AND TO INSURE THE CONTRACTOR'S RESPONSIBILITY TO CHECK AND CONFIRM ALL ROUGH OPENINGS AND OTHER DIMENSIONS FOR ACCURACY.
 SCOTT LUMBER IS NOT RESPONSIBLE FOR USER'S MISUSE OF DIMENSIONS OR FOR ANY DAMAGES. PLEASE FOR YOUR LAMBERT HOUSE ASSOCIATION ABOUT ANY PARTS OR MATERIALS WHICH TO BE USED.



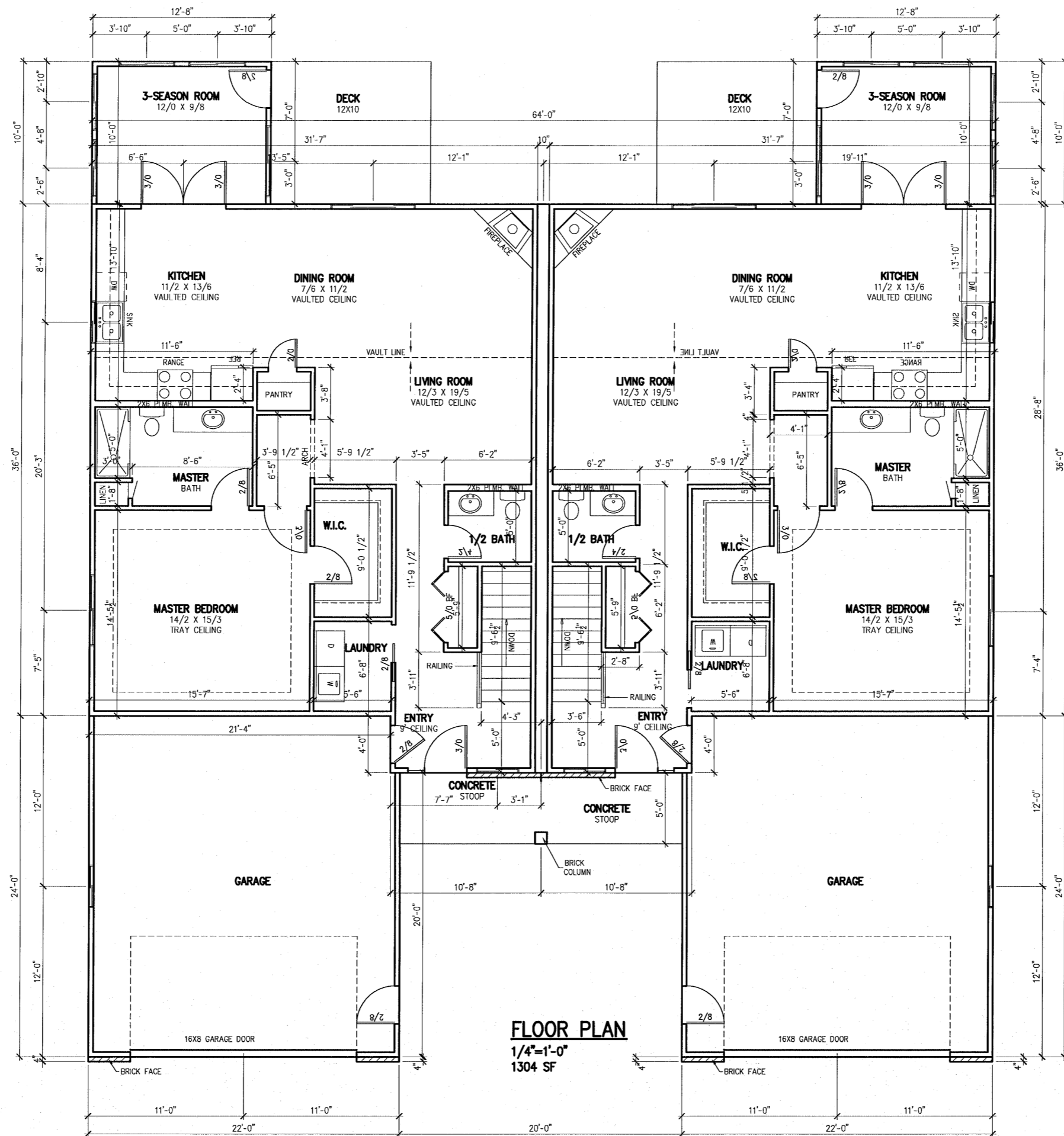
Blueprints are property of JOSHUA Inc.
 They cannot be reproduced, distributed
 or copied without the permission of
 Joshua Inc.
 Copyright 2008



RIGHT ELEVATION
1/4"=1'-0"



Blueprints are property of JOSHUA Inc.
They cannot be reproduced, distributed
or copied without the permission of
Joshua Inc.
Copyright 2008



FLOOR PLAN
 1/4"=1'-0"
 1304 SF

Blueprints are property of JOSHUA Inc.
 They cannot be reproduced, distributed
 or copied without the permission of
 Joshua Inc.
 Copyright 2008

PLAN # SFL08388 PAGE OF	SCOTT LUMBER A DIVISION OF LAMPERT YARDS, INCORPORATED	4843 S. GRANGE RD. SIOUX FALLS, SD (605)338-4860	CUSTOMER: JOSHUA INC.	DRAWN BY: R.A.
			DATE: 8/7/08	REVIEWED: R.A.

